

**ENERGY KINETICS
JUMPS FAR AHEAD
of old fashioned
tankless coil
technology!**

INTRODUCING . . .

Ascent™

Combi boiler by Energy Kinetics

Simple technology that cuts the high fuel bill
of tankless coil boilers by up to **20% or more!**



SHOWN
WITH OPTIONAL
SILENT BURNER
COVER

**Plus! Your family
enjoys peaceful quiet
thanks to our
boiler design – and,
with the silent burner
cover, Ascent is more
quiet than a small
microwave oven!**

**Other boilers are 30
times noisier!**

- **Proven** 30 year boiler!
- **Whisper quiet** with silent burner cover – no need to turn up the TV!
- Combined heat and hot water in one boiler with *hot water priority!*
- **Replaces 2, 3 and 4 section oil boilers!**
- **Lifetime Limited Warranty**

For high flow showers, fast fill tubs, higher efficiency and more fuel savings, or if you currently have a hot water tank, ask about our other great Energy Kinetics products! (See back cover.)

**Cuts up
to 20% or
more off
fuel bills!**

The Ascent Combi is ready 24/7, just like conventional tankless coil boilers, but because of its unique design and plate heat exchanger, it can cut your energy bill by up to 20% or more.

There's no tankless coil boiler that can compare for energy savings, quietness, and hot water delivery.

For even greater savings, you can select either a smart learning mode or on-demand operation at the touch of a button.

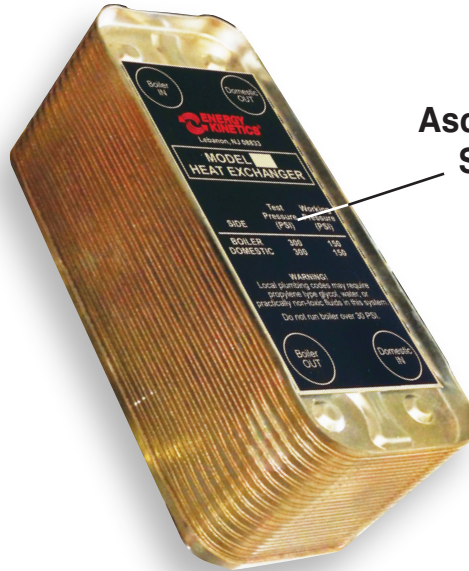
If you don't use hot water overnight during summer months, then your boiler does not have to run!

It's so smart, it can learn your weekly routines and be ready when you usually need hot water and save energy when you don't.

Ascent™

Combi boiler by Energy Kinetics

"Enjoy whisper quiet Ascent, and leave old tankless coil problems in the distant past!"



Ascent's revolutionary Sealix® plate heat exchanger

This innovative state-of-the-art PHE delivers reliable, **continuous** hot water – unmatched by any other tankless coil boiler.

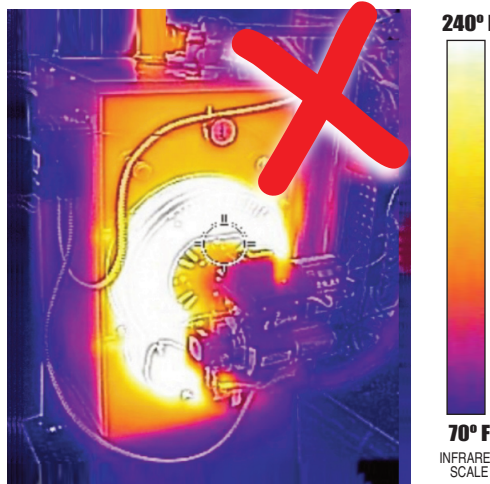
Plus there are no studs to break or gaskets to leak, with easy-to-service union connections. Our Sealix® non-stick coated surfaces prevent lime and mineral build up for exceptional long-term performance in hard water applications.



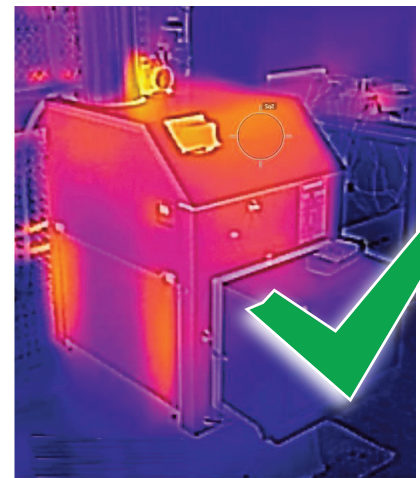
Tankless coil boilers typically fail at the coil flange or cast iron sections. **Ascent has no coil flange or cast iron sections.**



Tankless coil boilers waste fuel through draft regulators. **Ascent has no draft regulator.**



240° F
70° F
INFRARED SCALE



Infrared doesn't lie! Shown at left, a tankless coil boiler wastes heat and energy through jacket loss. Shown at right, Ascent sends more heat into your home.

These additional design and engineering features help Ascent easily out-perform old fashioned tankless coils.

On the Hydrostat™ control panel, select one of **four operating modes** that best suits your needs!

The energy converter is a **proven 30 year spiral design** for the highest efficiency. There are no sections or pins to foul, clean, or leak.

Removable stainless steel alloy combustion chamber for **clean burning operation**.

Hefty **2 inch thick insulation wrap** for high efficiency and quiet operation.

Swing down door for easy accessibility.

Plate heat exchanger.

Our smart Hydrostat controls hot water comfort and efficiency and **outperforms tankless coils**.

Optional silent burner cover combined with our spiral boiler design delivers **whisper quiet operation**.

Built in stand keeps Ascent off the cold floor.



UP TO **87%** AFUE



Hard water? Add a scale stopper for reliable operation (up to 25 grains of hardness) without cleaning!



With the silent burner cover, Ascent is more quiet than a microwave oven!

Our smart Hydrostat™ can learn your weekly routines.

More 2 inch thick insulation wrap.

Optional Clean In Place (CIP) valves location.

Boilerside Y-Strainer (CIP).

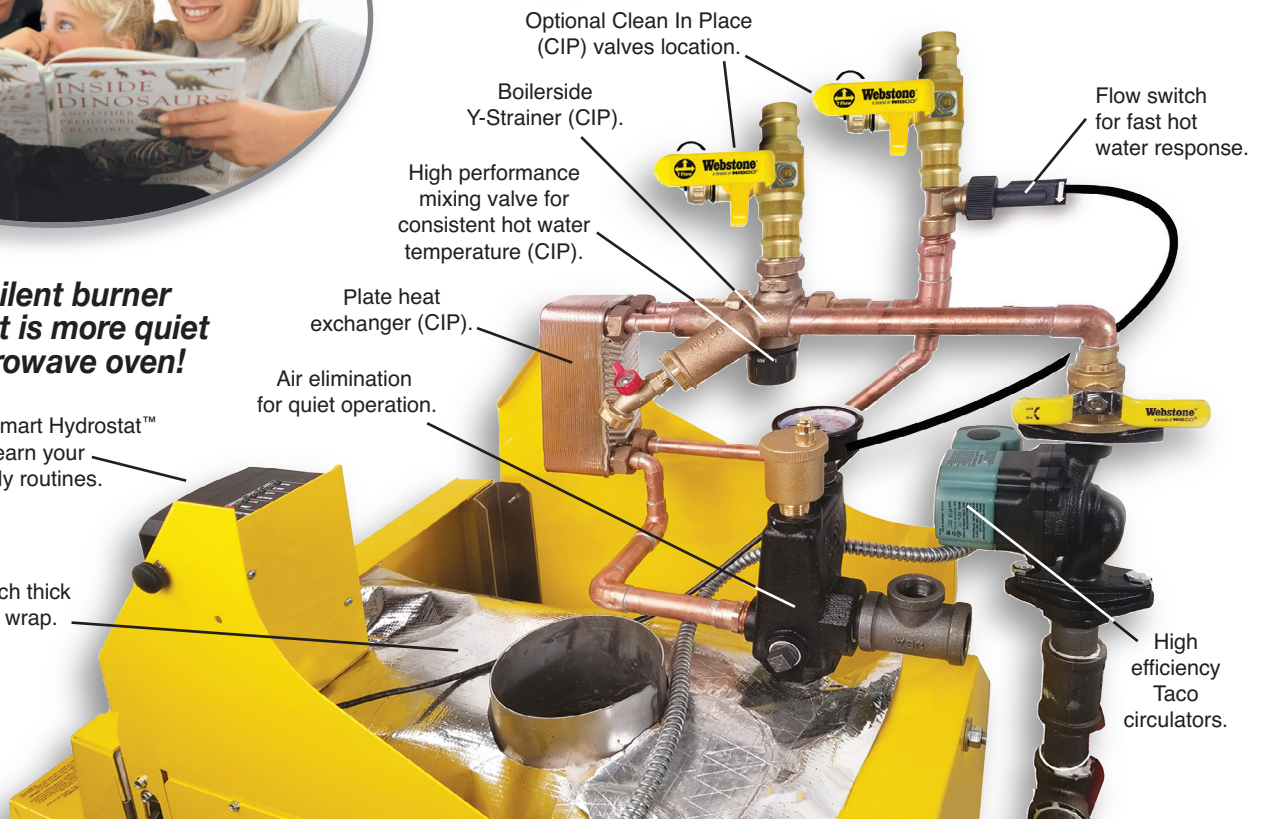
High performance mixing valve for consistent hot water temperature (CIP).

Plate heat exchanger (CIP).

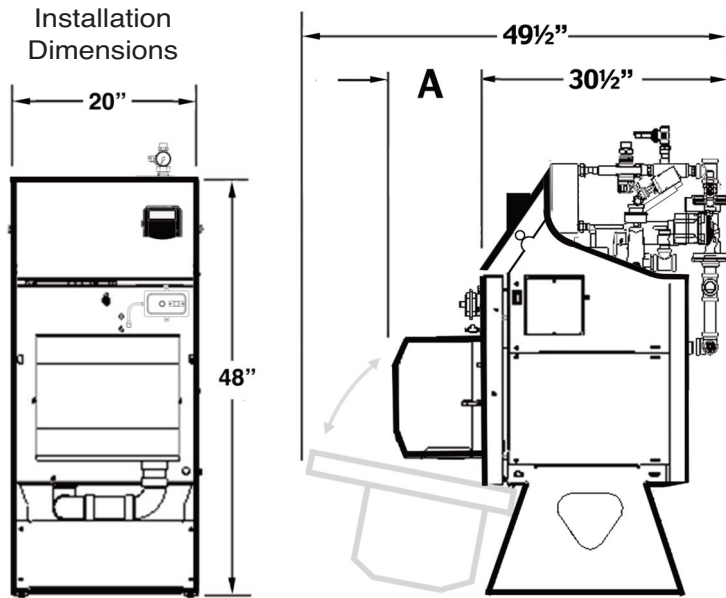
Air elimination for quiet operation.

Flow switch for fast hot water response.

High efficiency Taco circulators.



Ascent Combi Model EK1T



Recommended service clearances:
 20" from front door face
 5" from left side
 12" from right side

Clearance to combustibles:
 4" from rear cover
 10" above top cover
 0" from polypropylene pipe
 0" for all the other dimensions

Ascent Combi Model EK1T

Weight	315 lbs.
Water Content	3 gallons
Air Inlet Pipe Size*	3" PVC
Boiler Flue Outlet†	5"
Hydronic Supply	1"
Hydronic Return	1"
Hot Water Supply	3/4"
Hot Water Make-up	3/4"
Bypass Circulator	Taco 007e
Hydronic Circulator	Taco 007e

*Reduce to 2" PVC for up to 20' plus five elbows
 † 6" liner recommended for 1.25 GPH firing rate

Dimension "A" See drawing at left

Burner	W/O Cover	With Cover
Carlin EZ-1	9"	9 1/2"
Carlin EZ-Gas	11 5/8"	12 3/4"

Included (factory piped and assembled): ASSE mixing valve, boiler base, blocked vent safety switch, dynamic air elimination manifold, ON/OFF switch and junction box, 3/4" drain valve, plate heat exchanger and combi hot water assembly, hydronic Y-strainer, circulator flanges, door safety switch.

Included (field install):

Clean in place valves, relief valve, hydronic circulator (wiring included).

Draft regulator not required or recommended due to advanced combustion chamber.

Ascent Combi Model EK1T Specifications

Oilheat home heating system

Input	Gross output	AFUE	Hot water†
.85 GPH	104,000 BTU/HR	87%	2.7 GPM
1.00 GPH	121,000 BTU/HR	86%	3.1 GPM
1.25 GPH*	149,000 BTU/HR	85%	3.8 GPM

Natural gas / propane home heating system

Input	Gross output	AFUE	Hot water†
120,000 BTU/HR	103,000 BTU/HR	86%	2.7 GPM
150,000 BTU/HR	128,000 BTU/HR	85%	3.3 GPM
175,000 BTU/HR	147,000 BTU/HR	84%	3.8 GPM

*6" liner recommended for 1.25 GPH firing rate

† Domestic hot water rating based on 77° rise. Not for comparison with tankless boiler ratings.

AFUE
 UP TO **87%**



For high flow showers, fast fill tubs, higher efficiency and more fuel savings, or if you currently have a hot water tank, ask about these great Energy Kinetics products



Exceptional residential lifetime limited warranty!
 See actual warranty for details.



Better heating, bigger savings from the Energy Kinetics family of products.

Energy Kinetics / System 2000®
 51 Molasses Hill Road, Lebanon, NJ 08833
 (800) 323-2066 Fax (800) 735-2068
 visit www.energykinetics.com



"Tankless coil ratings overstate hot water delivery. They use a misleading short five minute flow test. They just can't keep up with Ascent's continuous flow."